

Homes
BaywestTM
Crafted for Life. Designed Around You.

HARLOW

2,728 SQ.FT. | ESTATE TWO-STOREY



ELEVATIONS



PRAIRIE



CONTEMPORARY



FRENCH COUNTRY



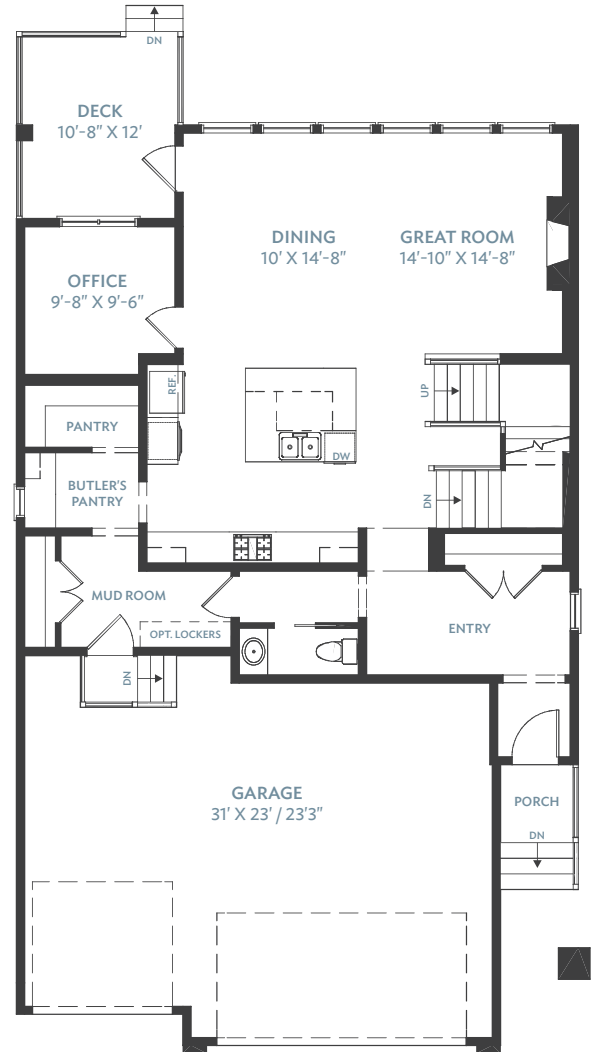
HOME DESIGN PROCESS

- 1 Choose from a variety of standard planned models.
- 2 Determine your desired elevation.
- 3 Incorporate pre-planned options that are available for each model.
- 4 Ask our team about additional options to personalize your Baywest Home.

HARLOW

MAIN FLOOR

HOME	\$	_____
HOME PACKAGE	\$	_____
LOT	\$	_____
GST	\$	_____
TOTAL	\$	_____



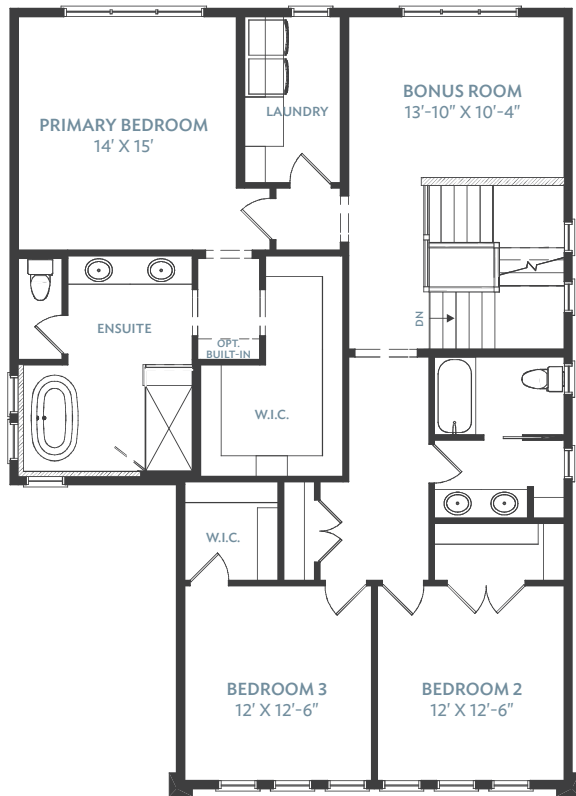
This is a model designed by Baywest Homes LP. Plan and exterior elevation are illustrations only. Elevations, dimensions and specifications shown may be approximate and display non-standard features. The builder reserves the right to make changes without notice. All rights reserved. © Baywest Homes



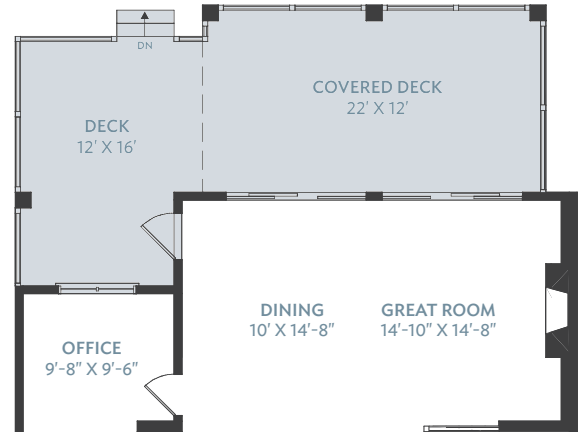
MAIN		1,232	SQ.FT.
UPPER		1,496	SQ.FT.
TOTAL		2,728	SQ.FT.

UPPER FLOOR

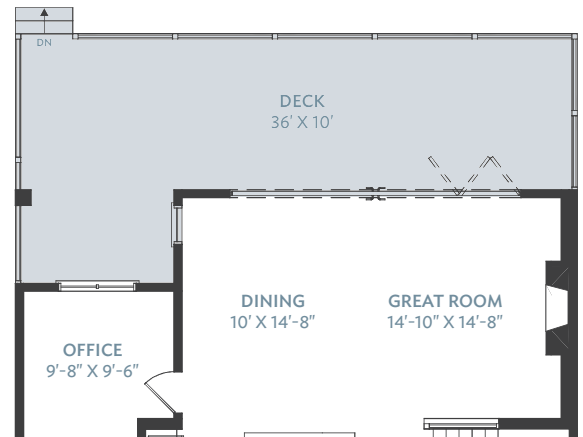
OPTIONS



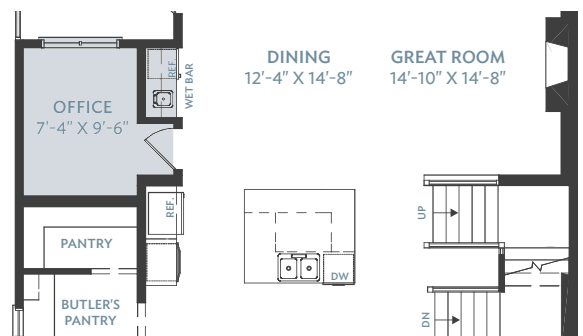
EXTENDED & COVERED DECK



EXPANDED DECK & TESORO DOORS

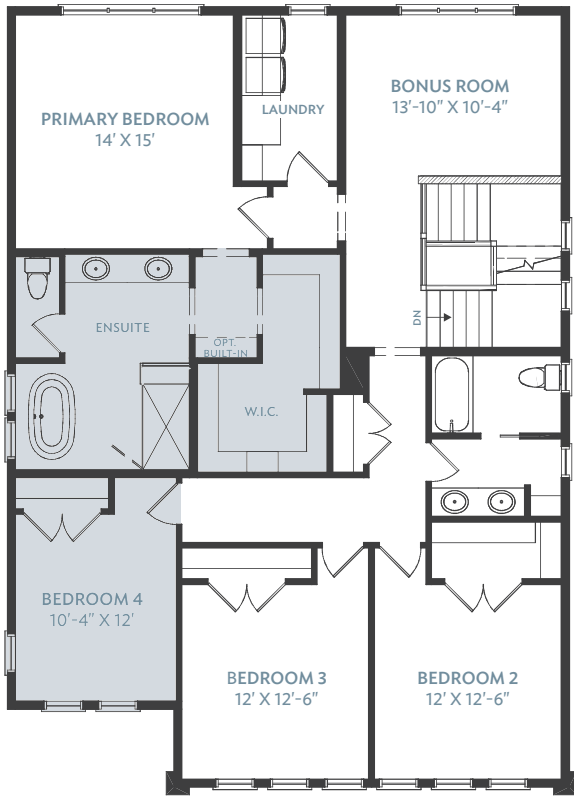


WET BAR

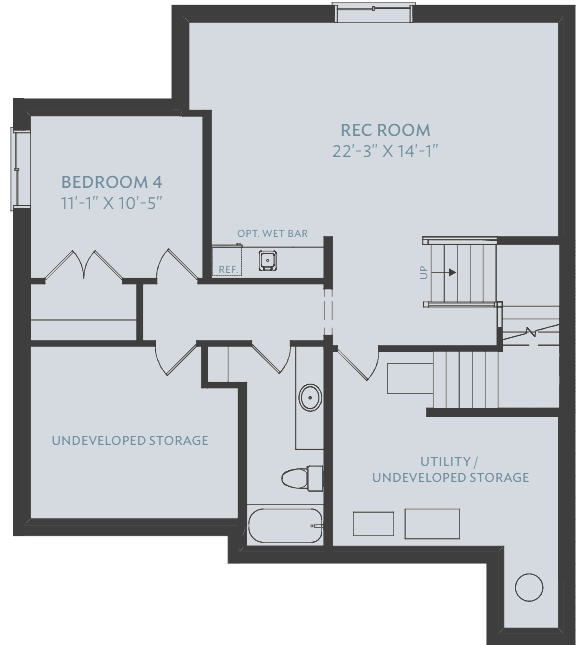


OPTIONS

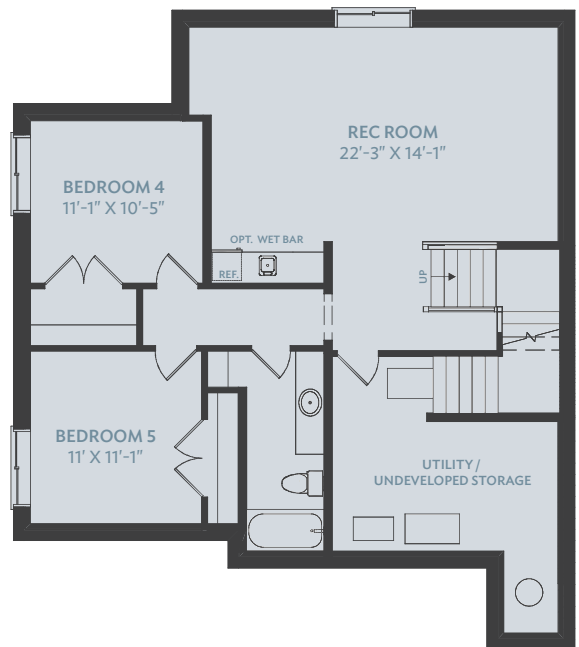
FOUR BEDROOMS
ADDS 154 SQ.FT.



LOWER LEVEL DEVELOPMENT:
ADDS ONE BEDROOM & REC ROOM
ADDS 792 SQ.FT.



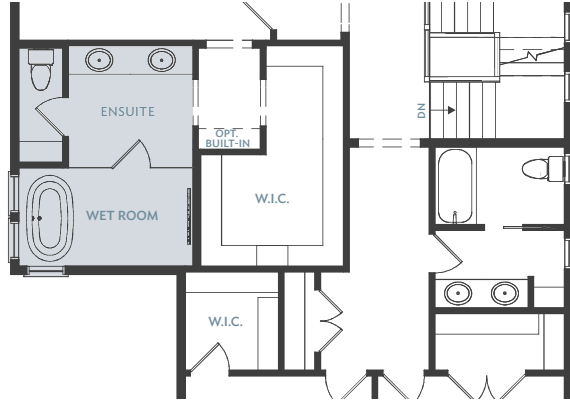
LOWER LEVEL DEVELOPMENT:
ADDS TWO BEDROOMS & REC ROOM
ADDS 942 SQ.FT.



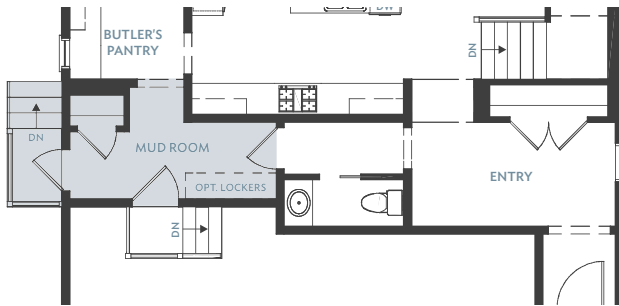
FOUR BEDROOMS & ENSUITE
ADDS 154 SQ.FT.



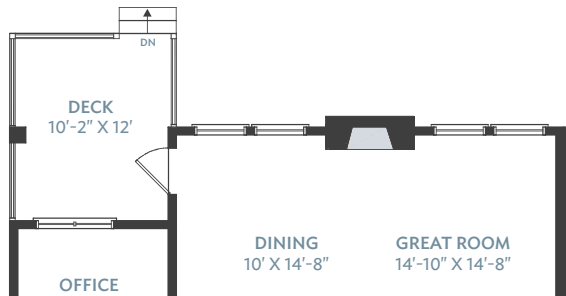
ALTERNATE ENSUITE - WET ROOM



ALTERNATE MUD ROOM - SIDE ENTRANCE



FIREPLACE RELOCATION



BAYWESTHOMES.COM

{ FIND US ON }

